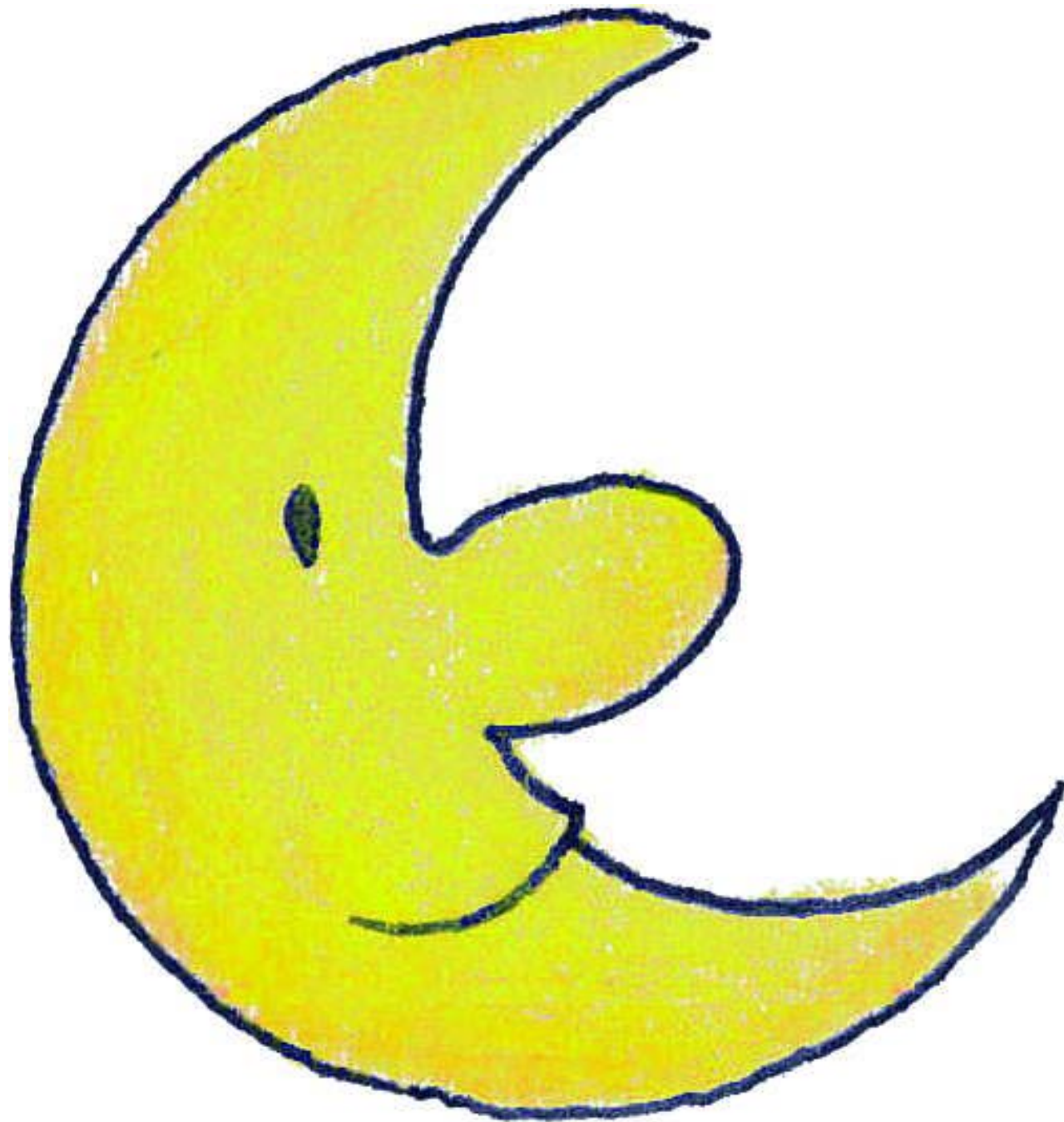
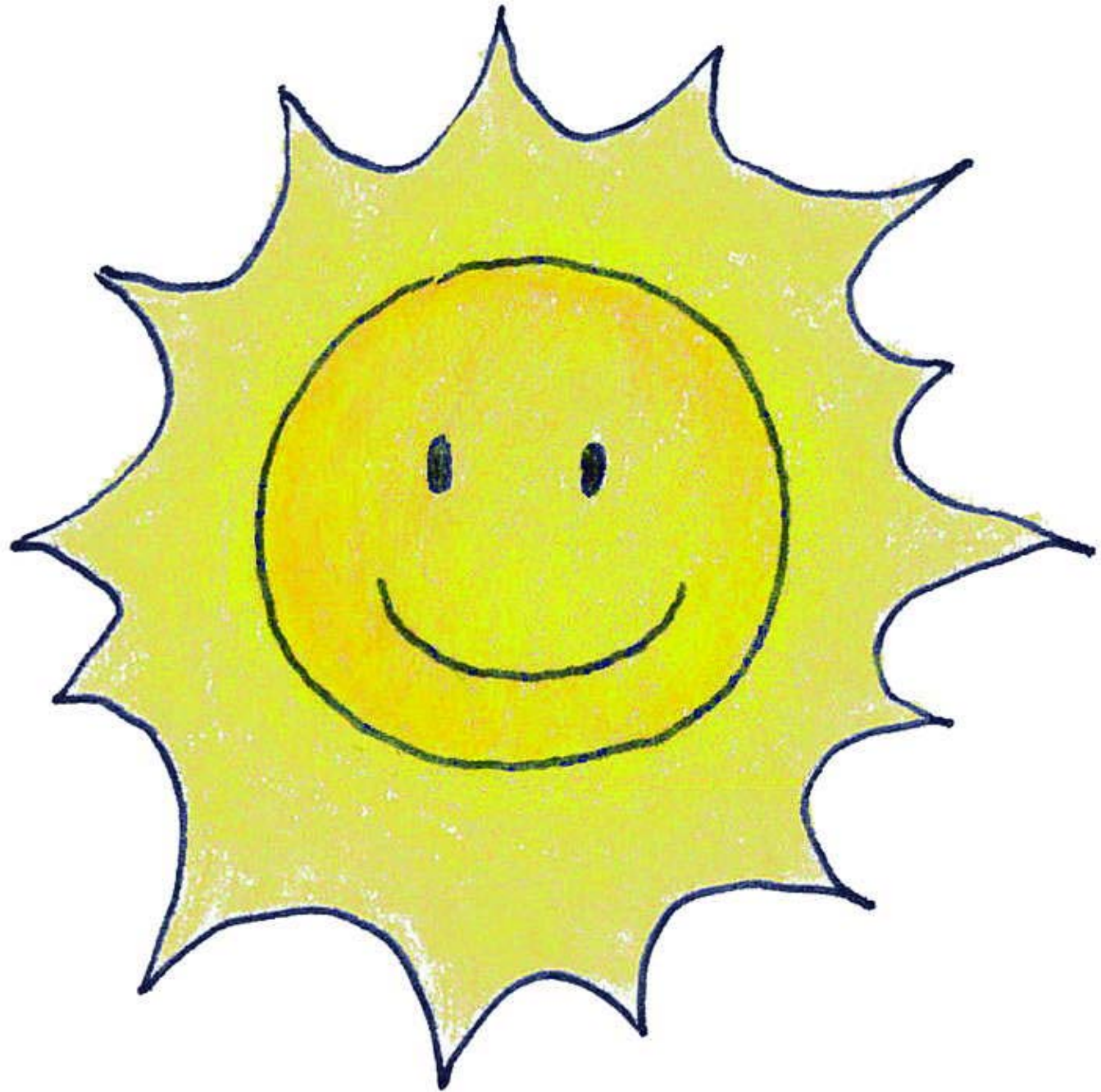


GRADIŠČANSKI  
HRVATI

Die Burgenländischen Kroaten



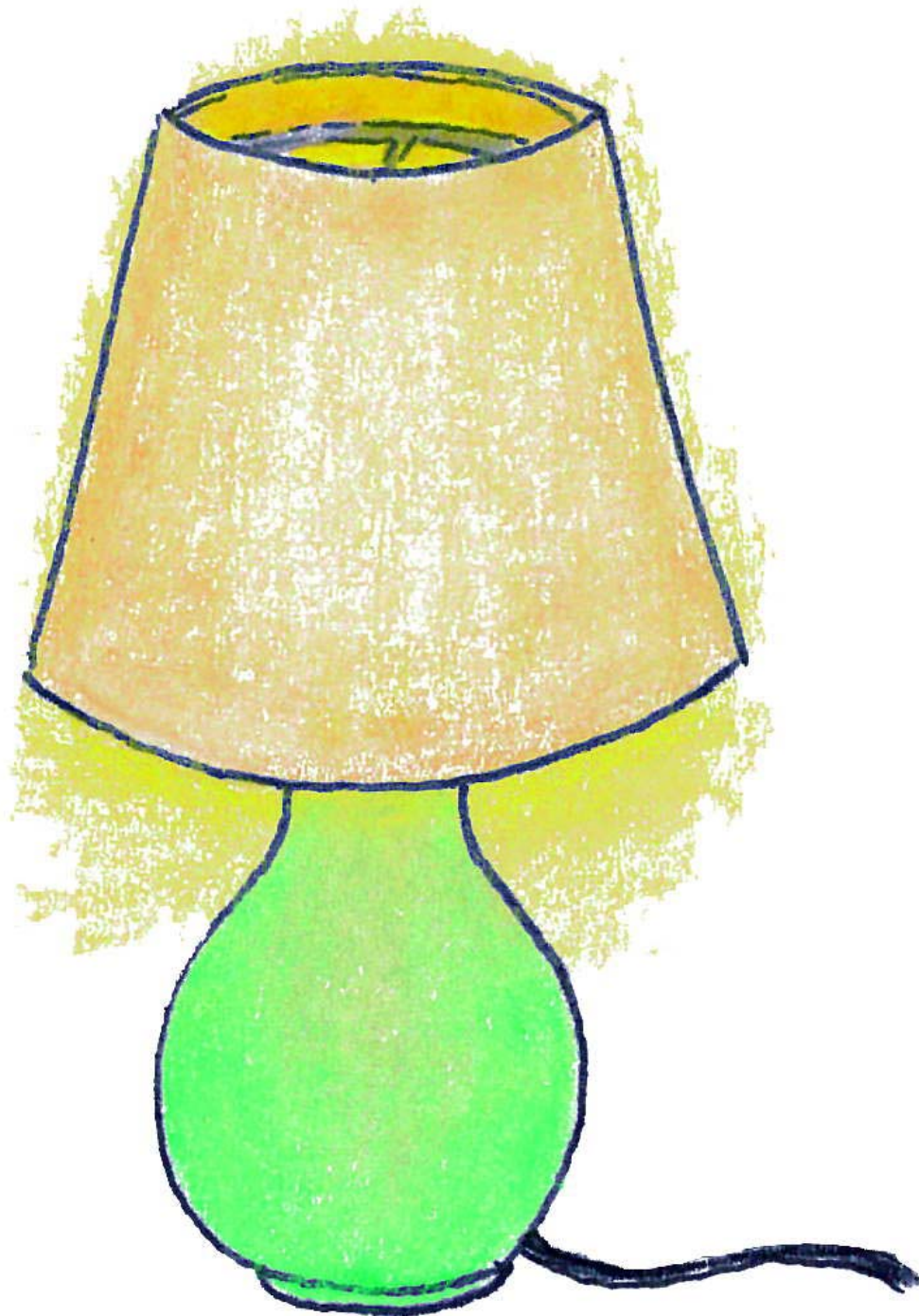




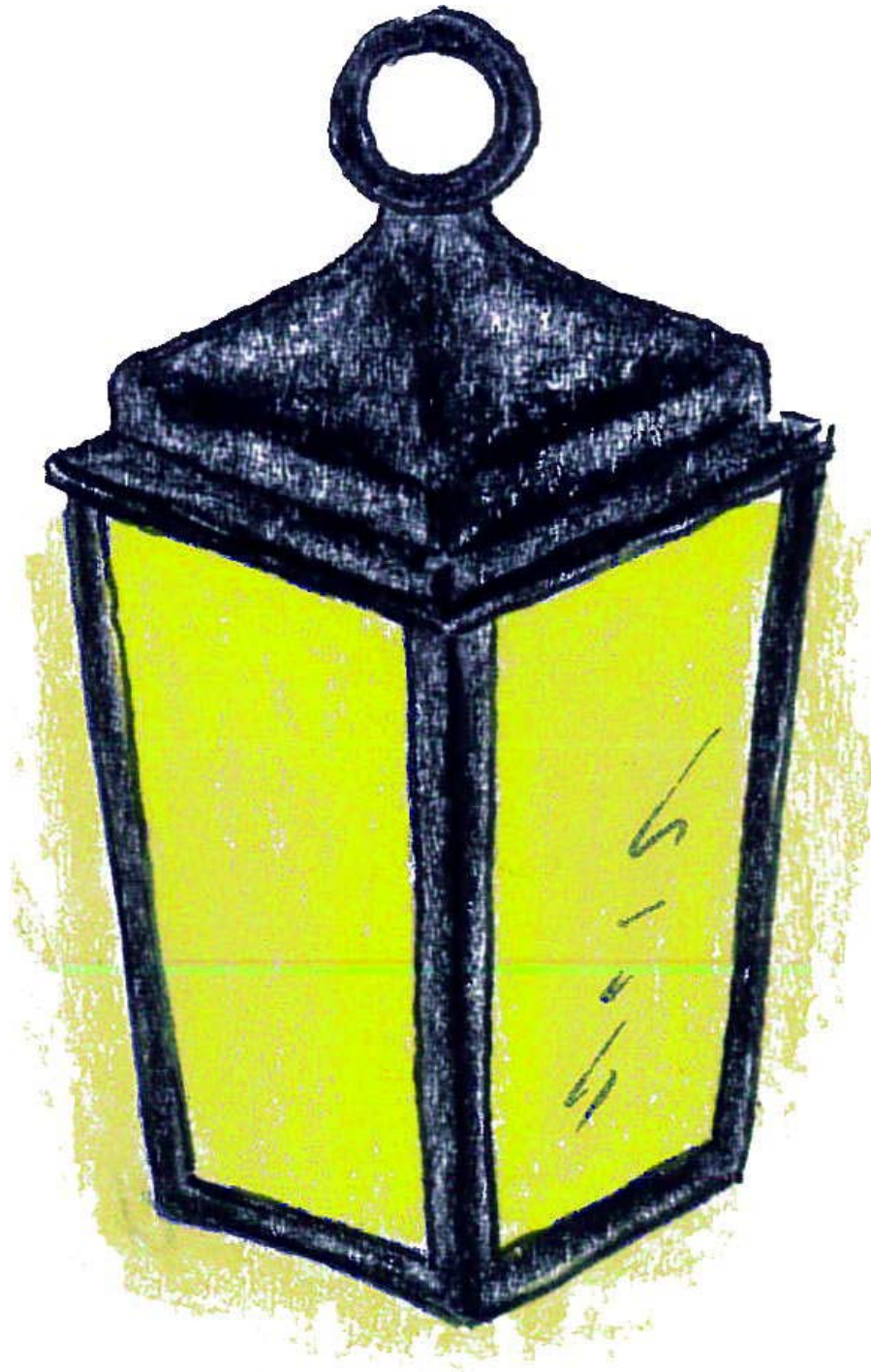






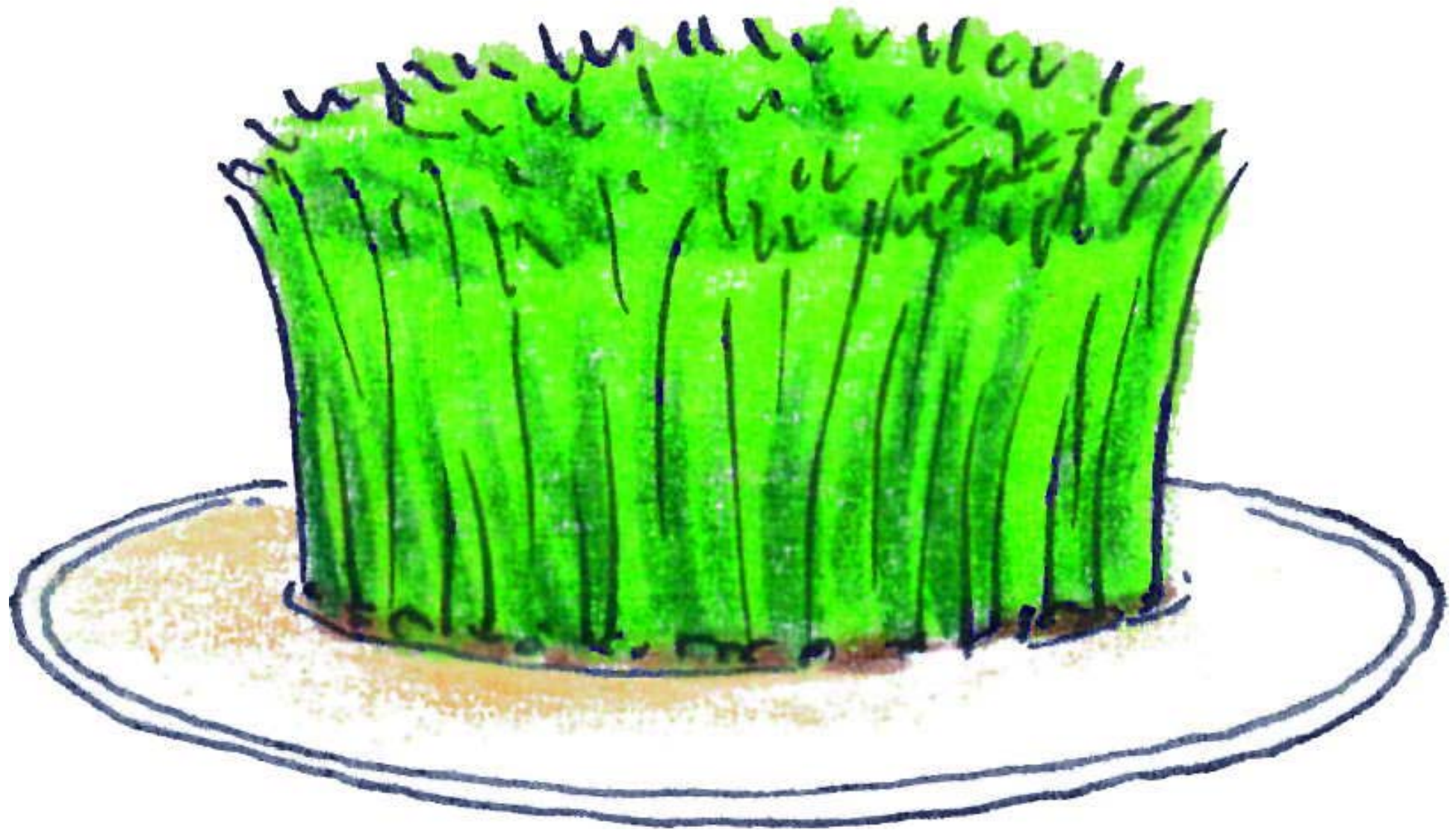




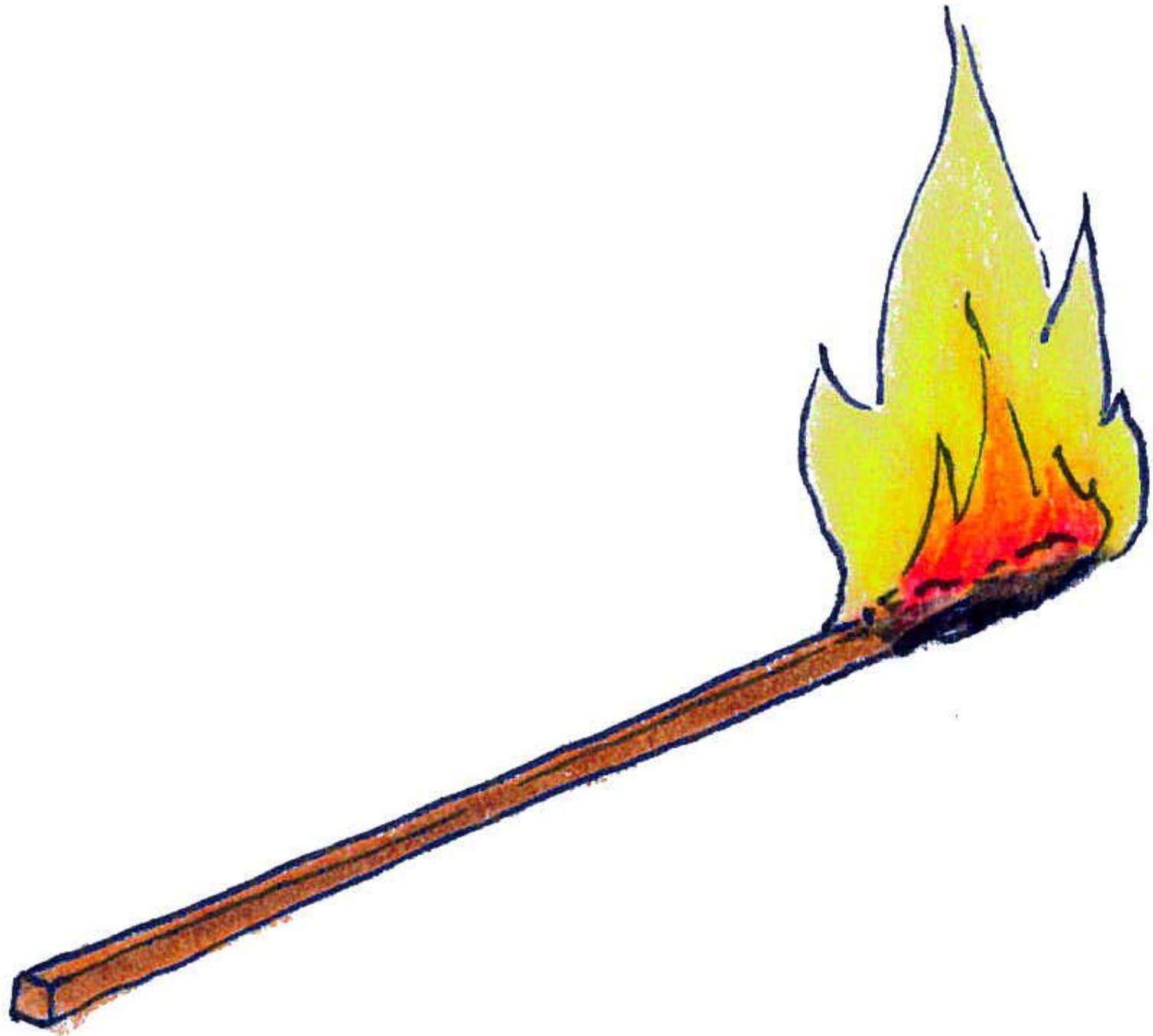


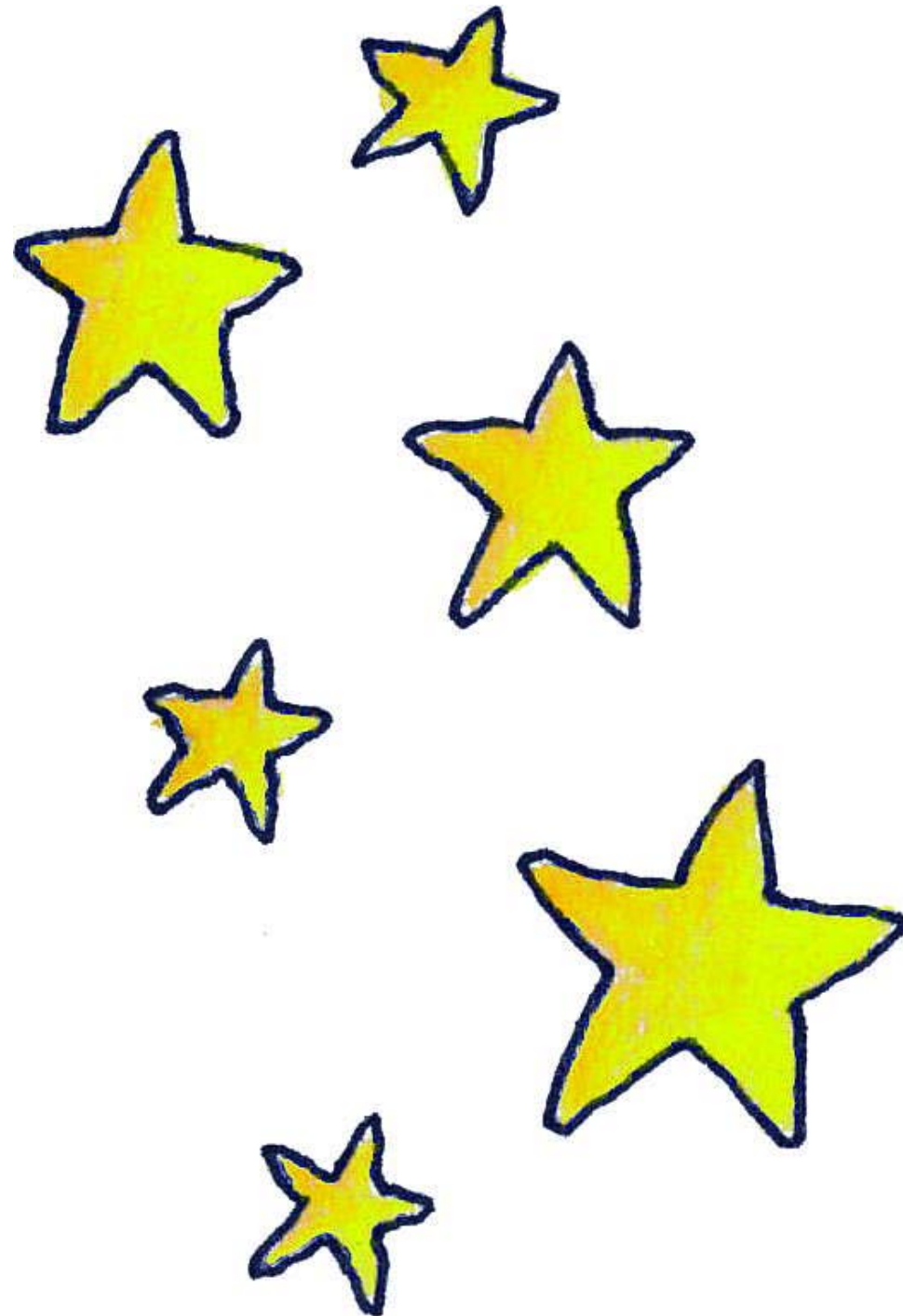


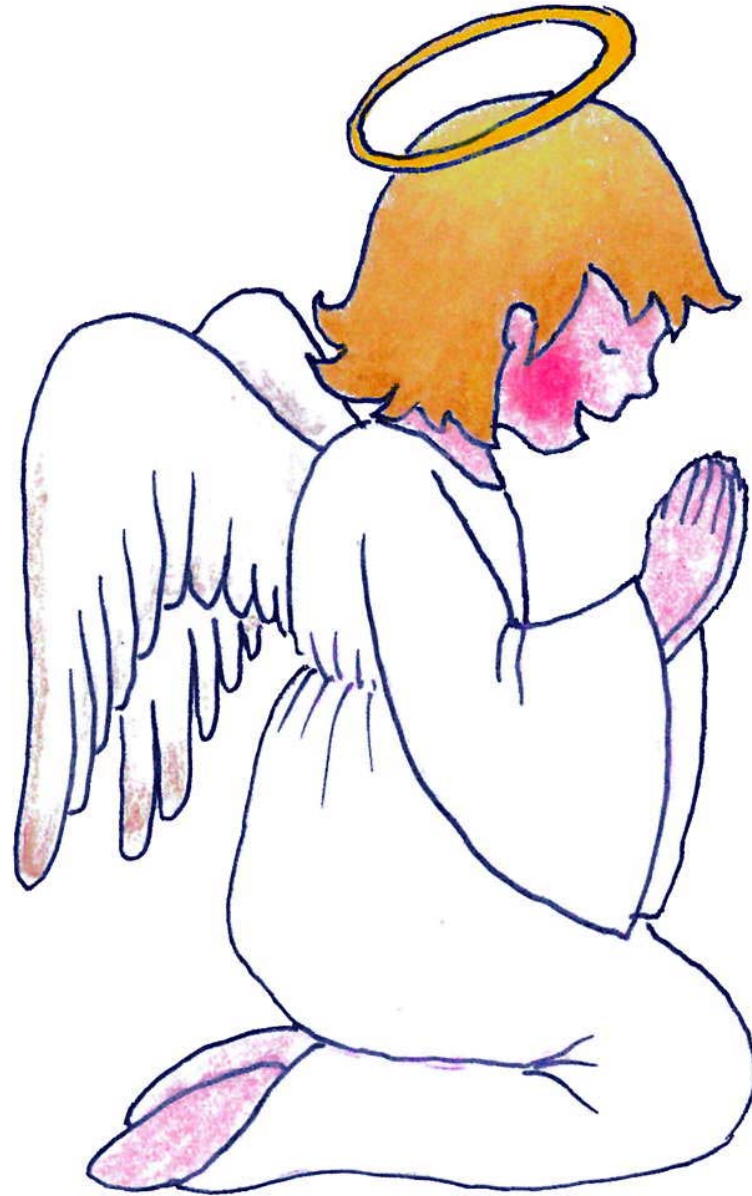












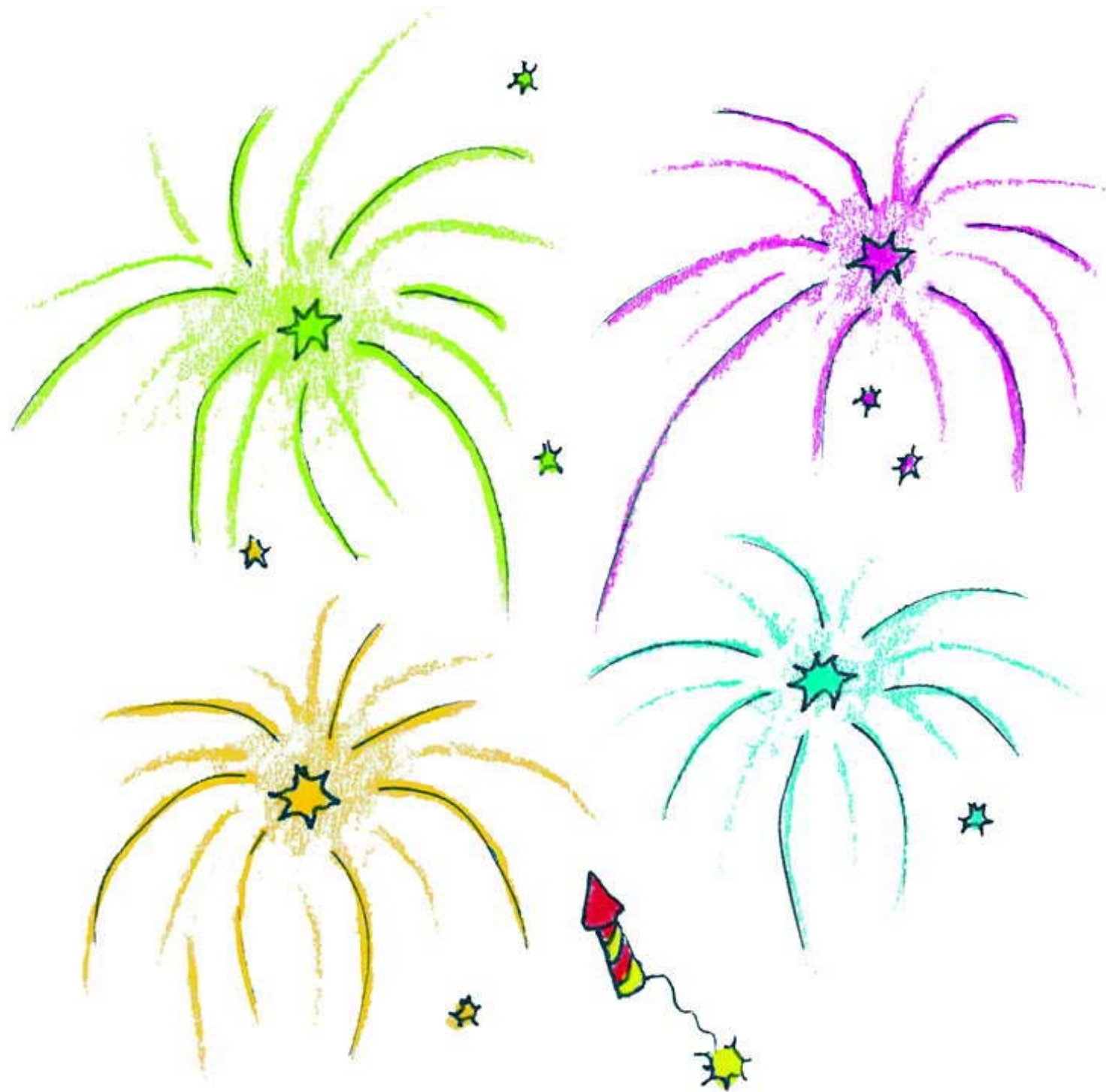




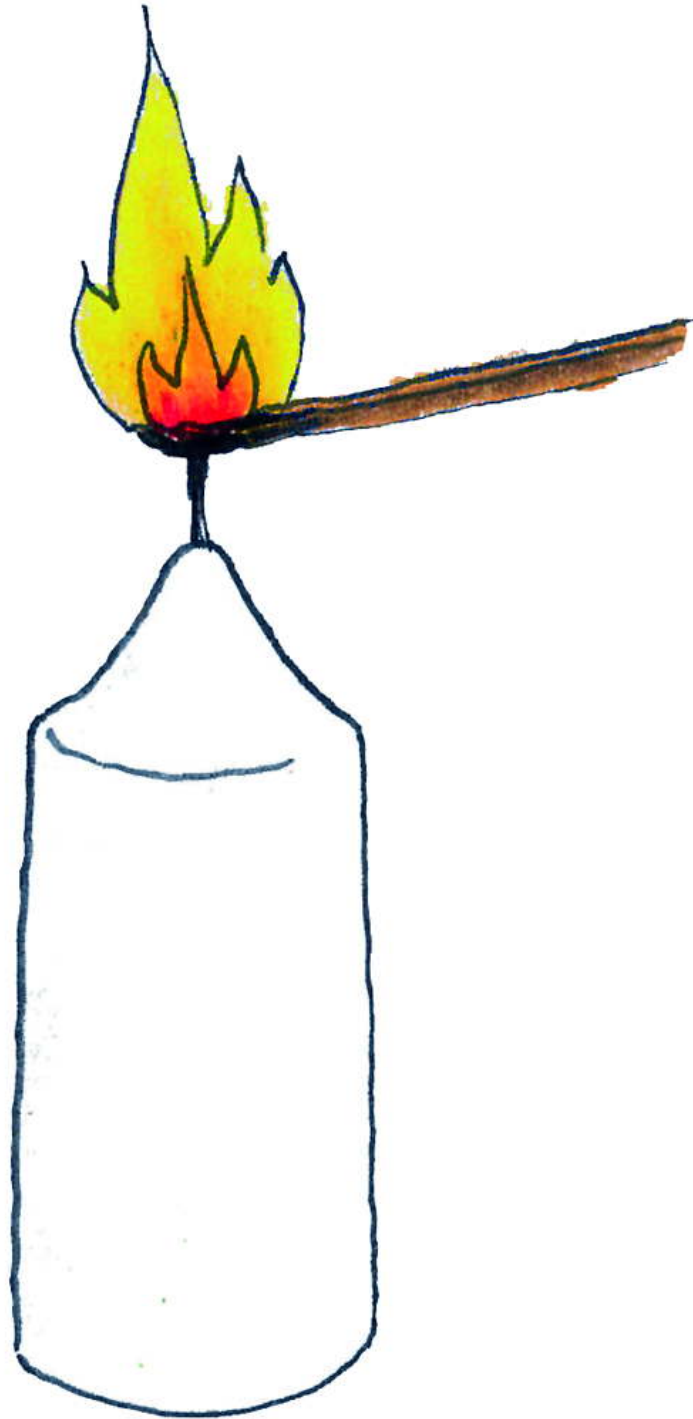


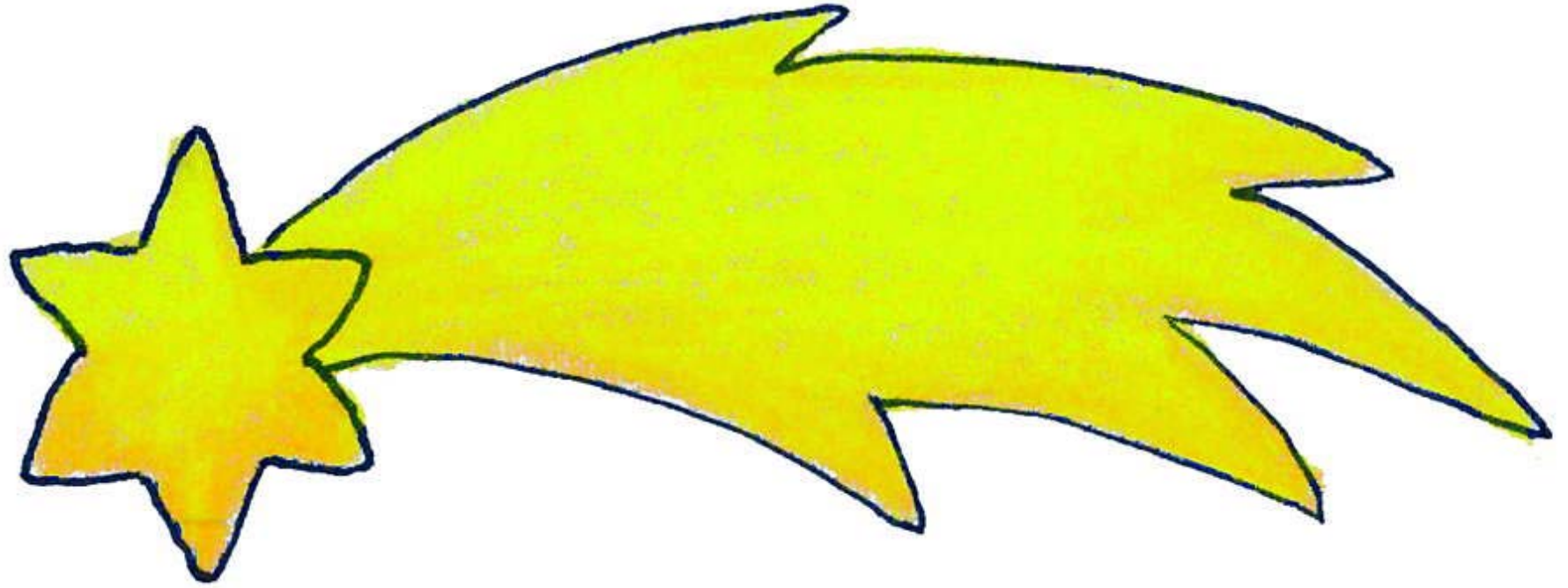




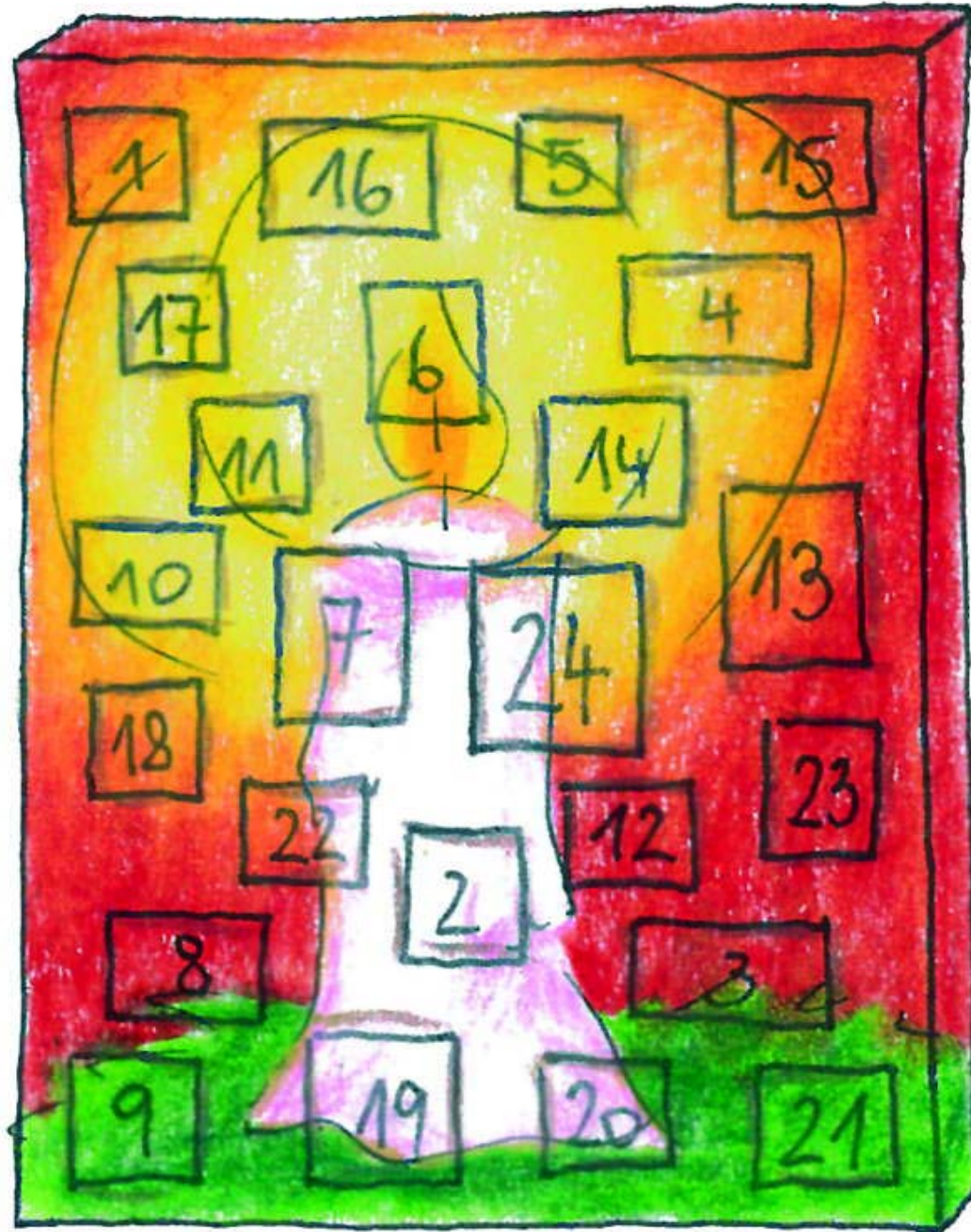








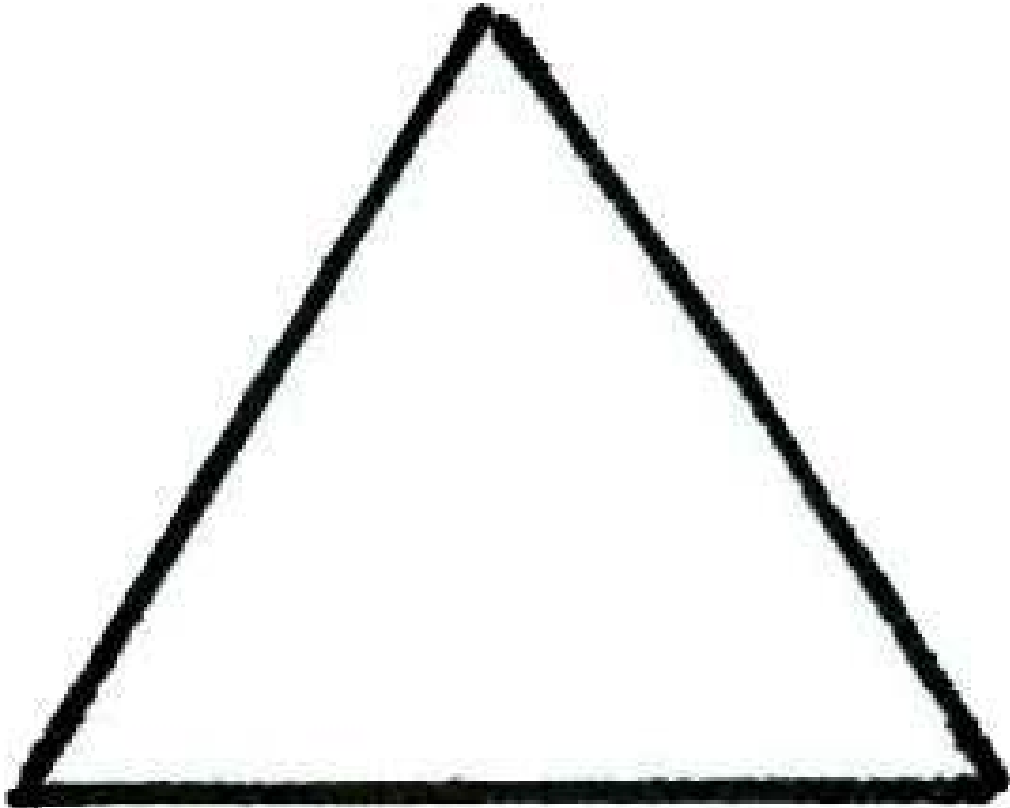


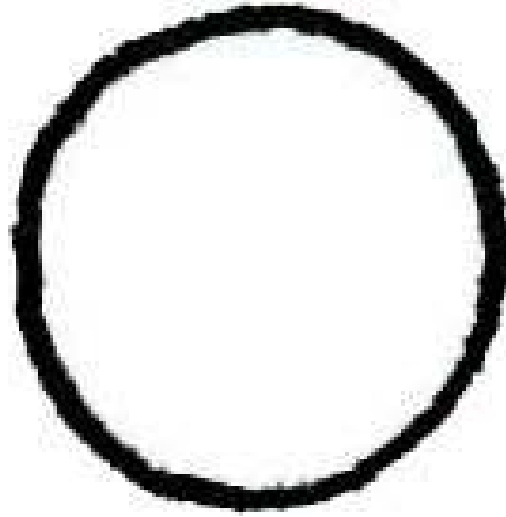


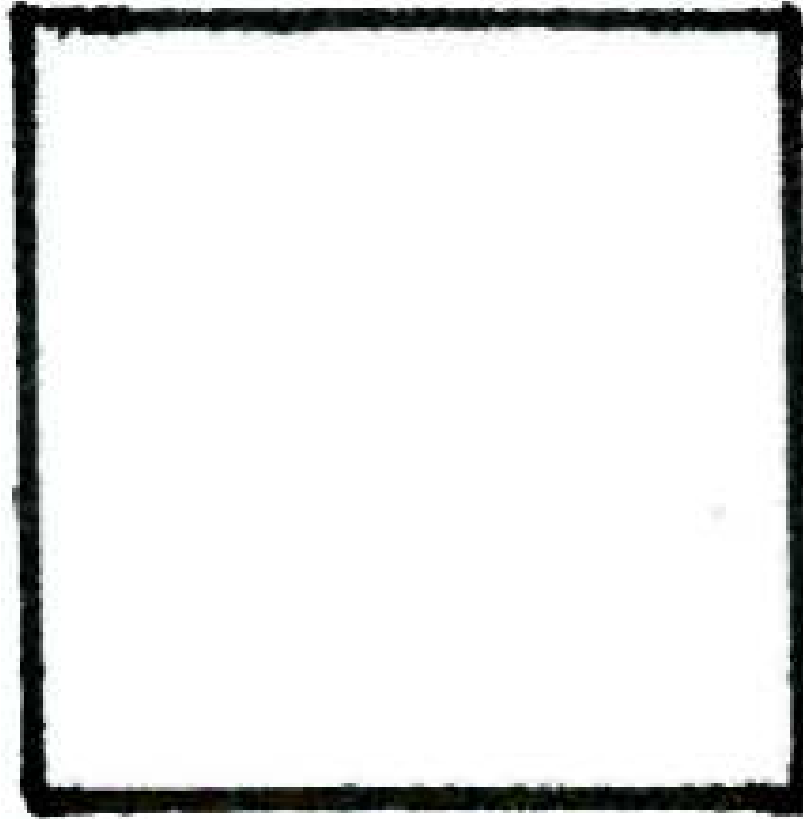


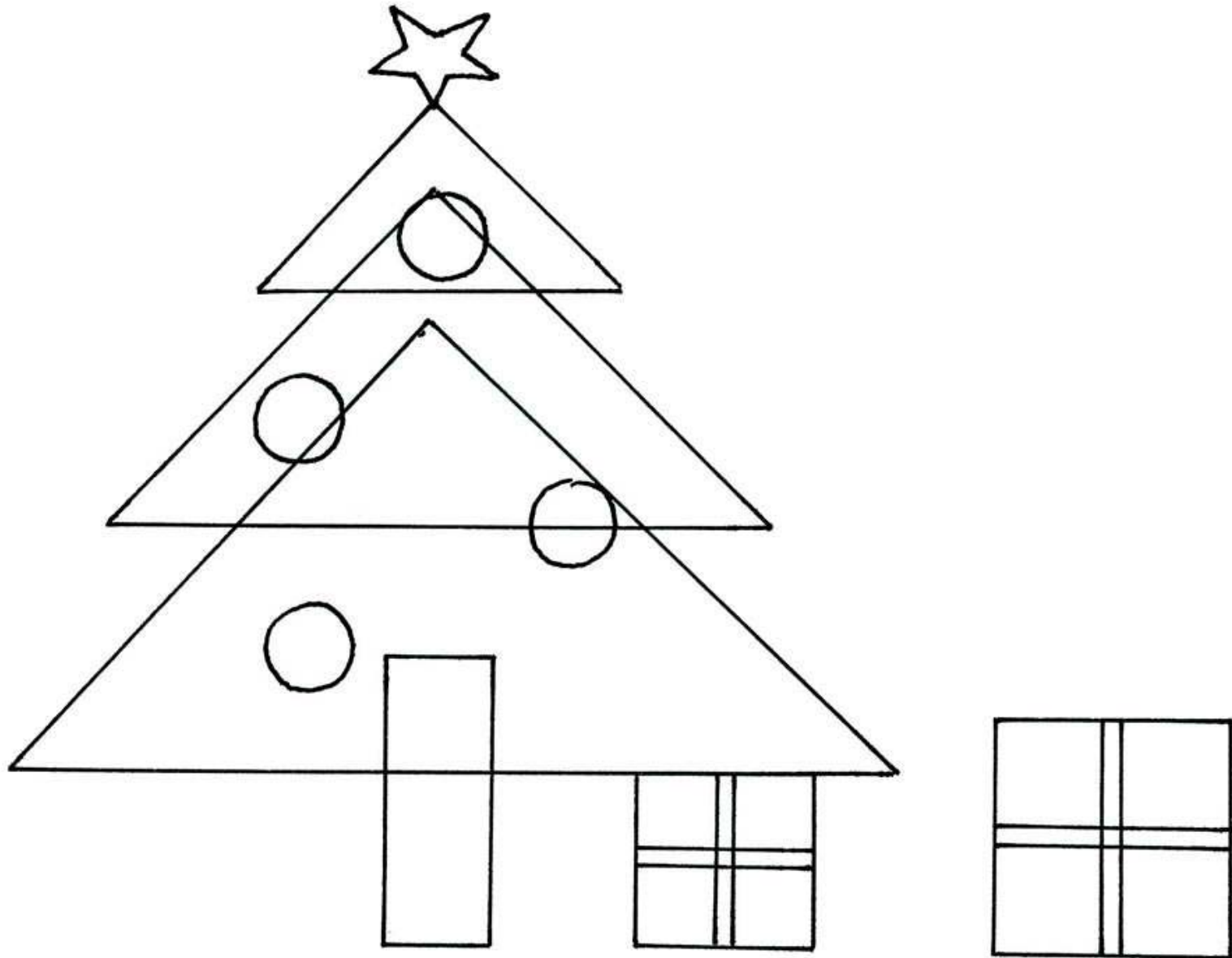




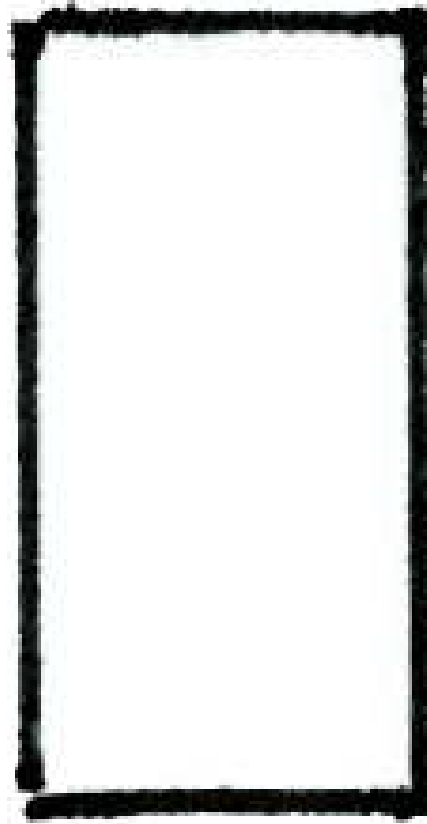


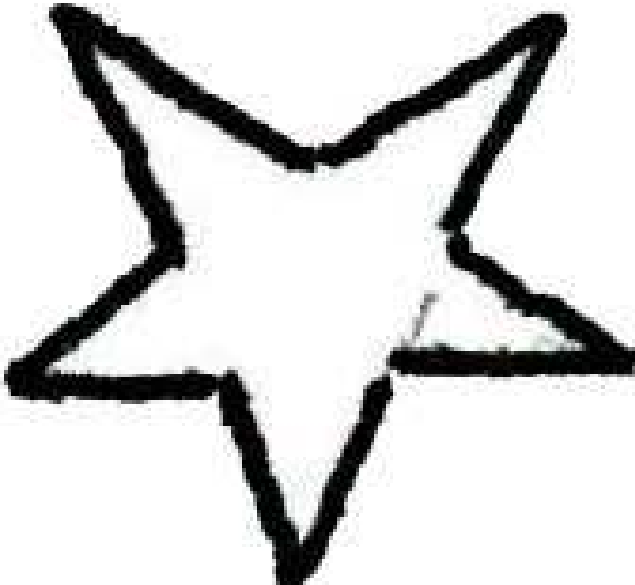


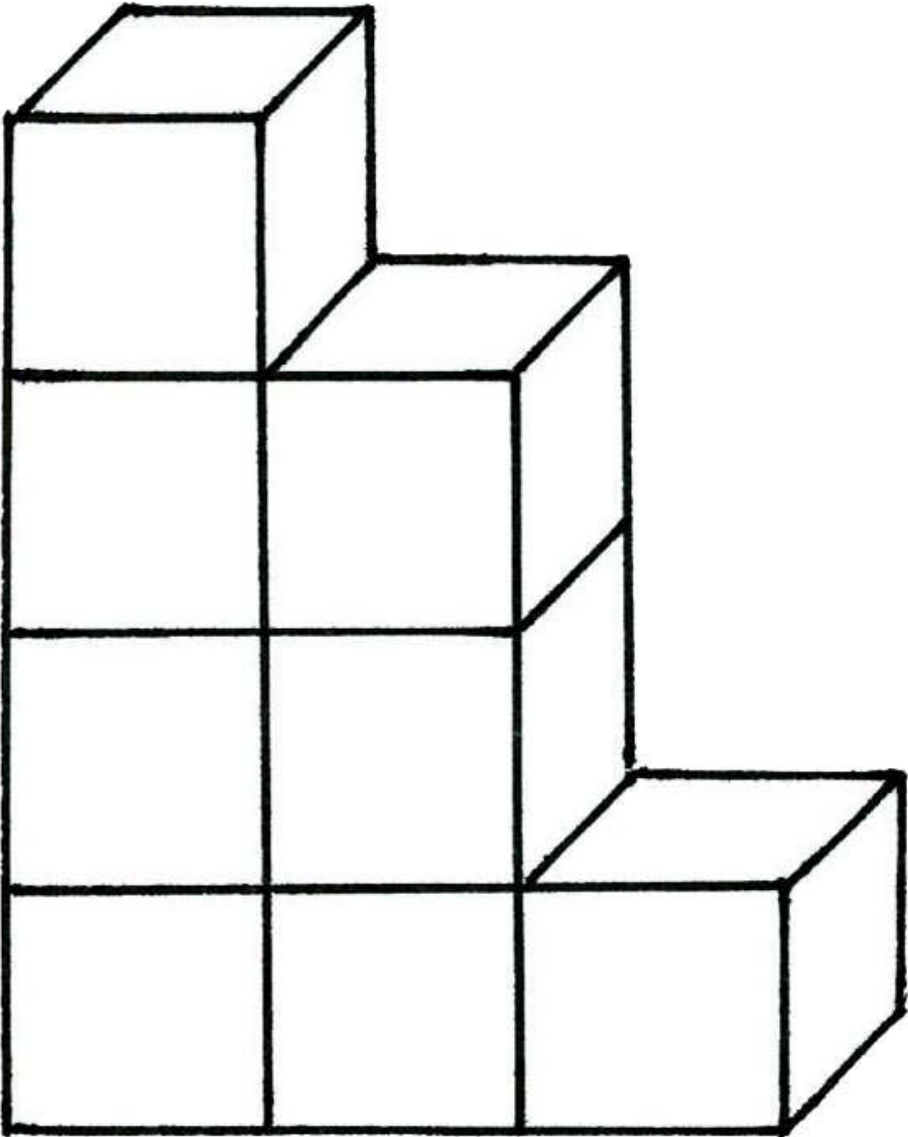


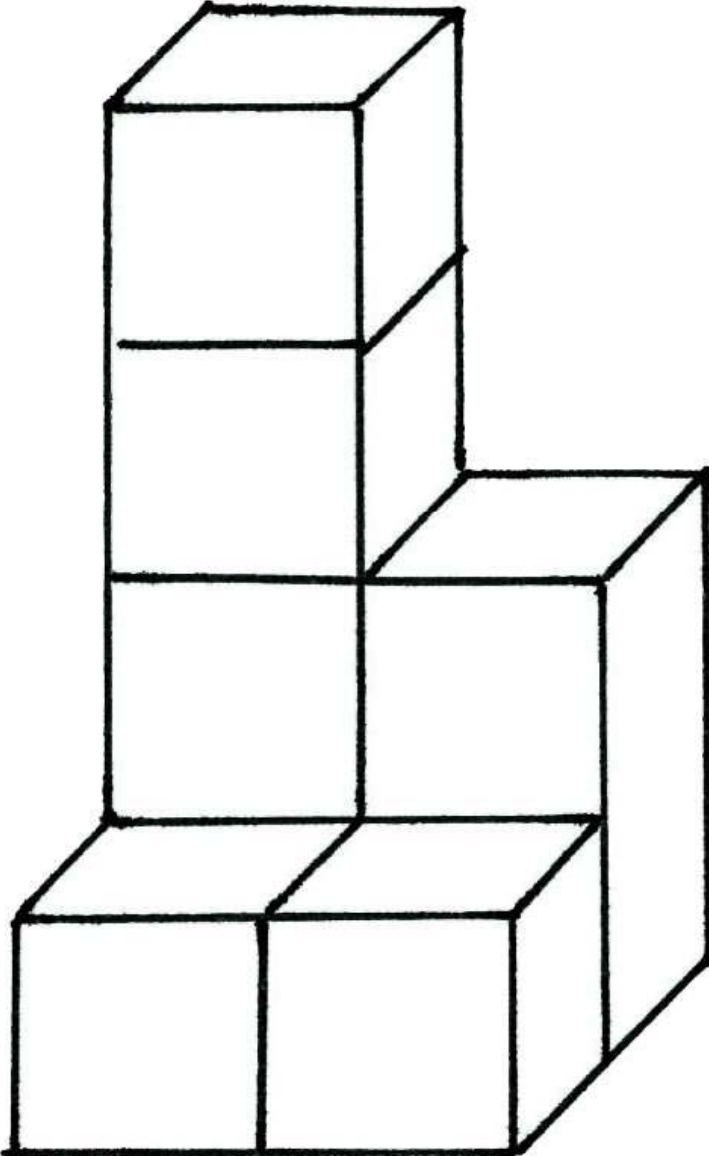


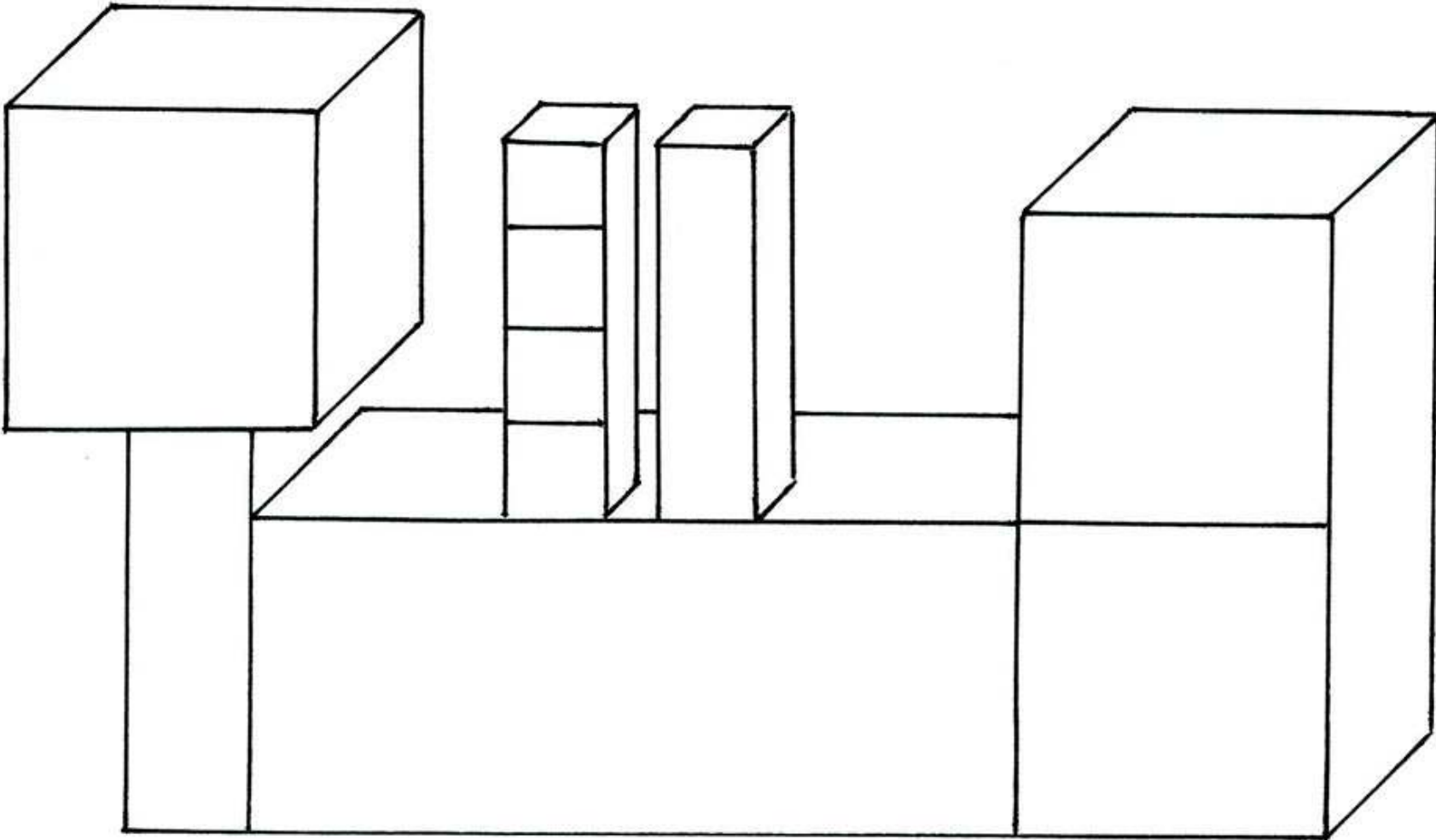


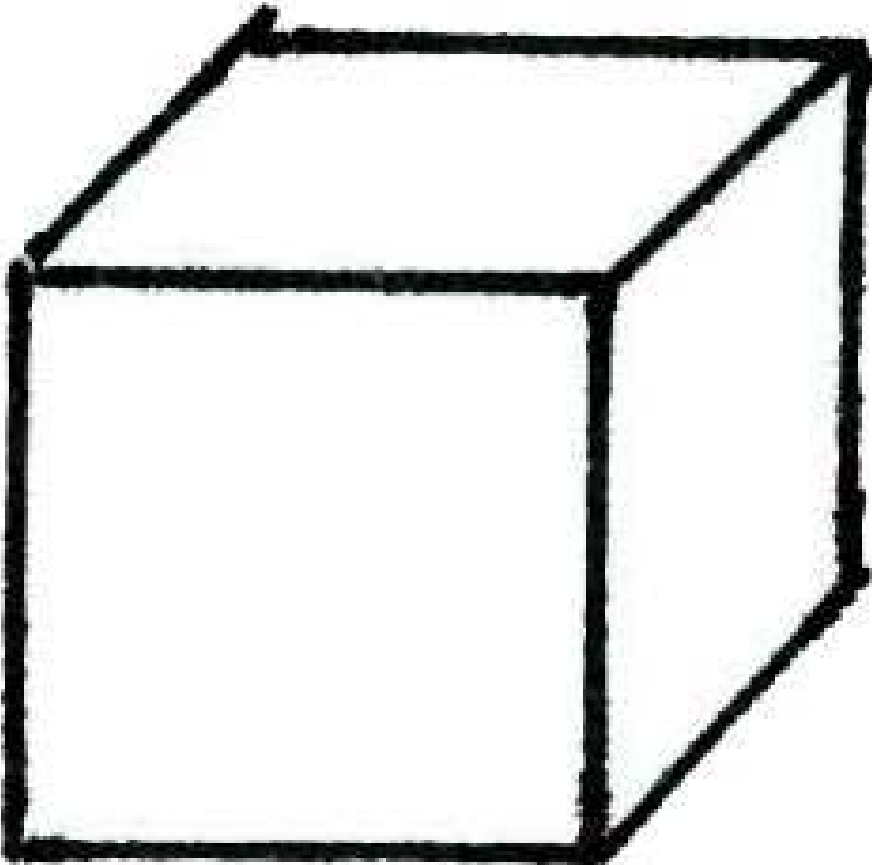


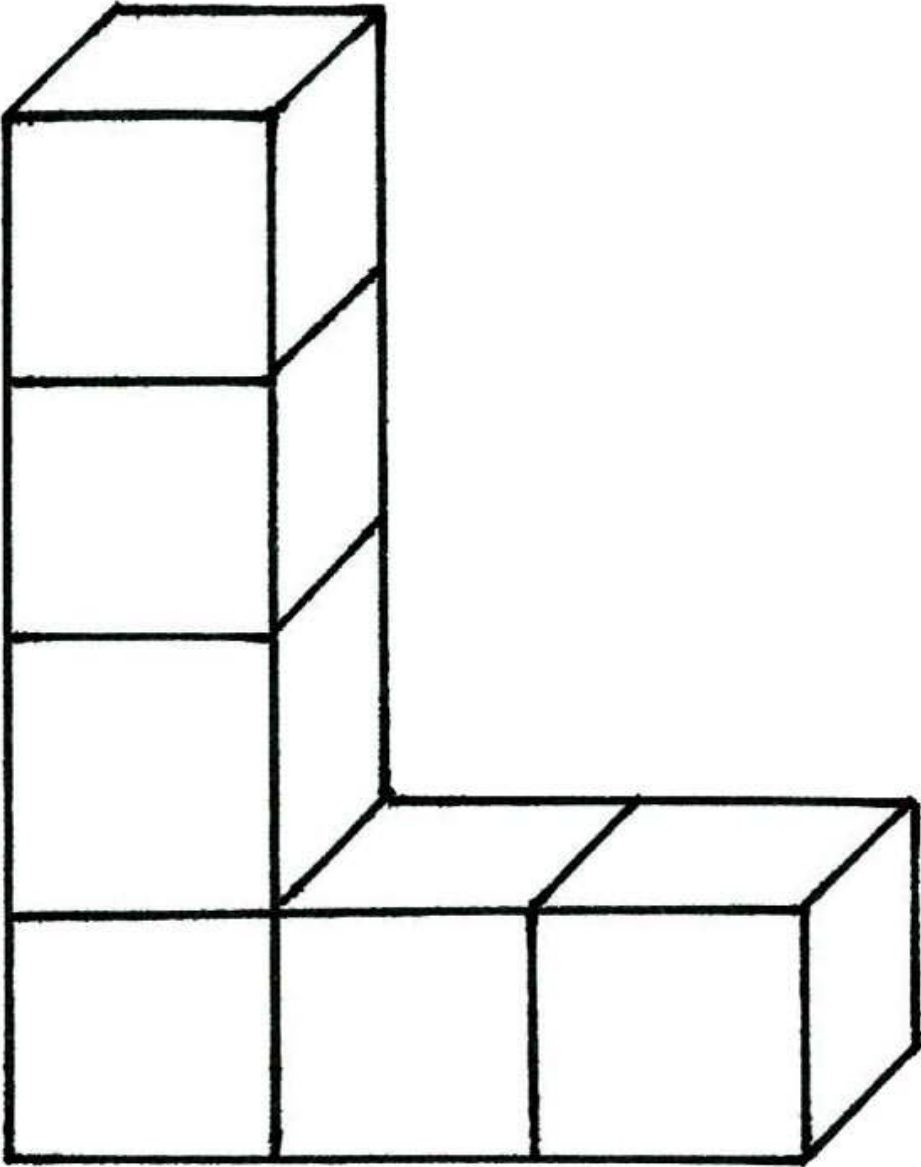








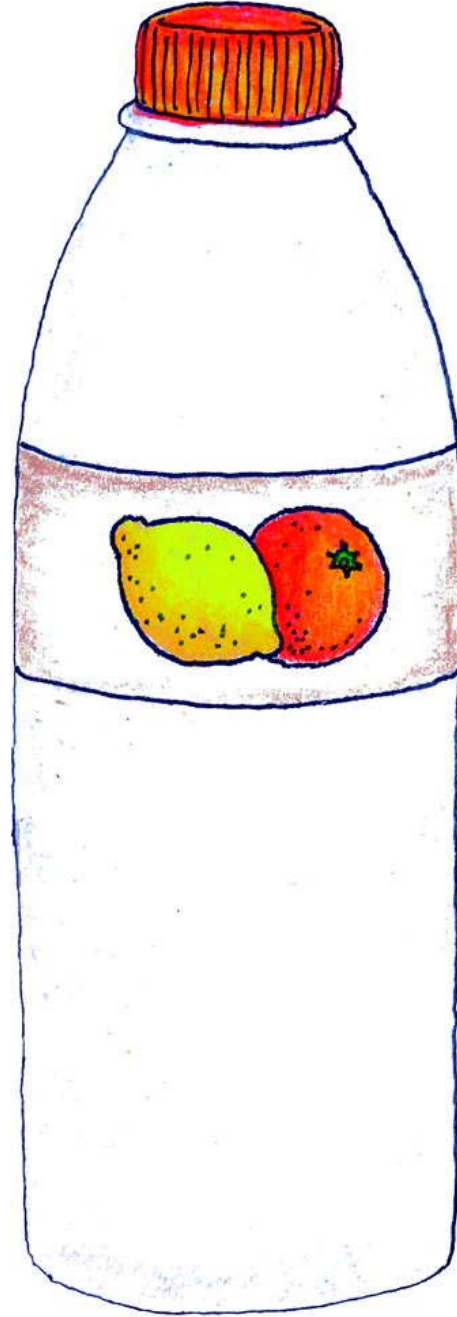




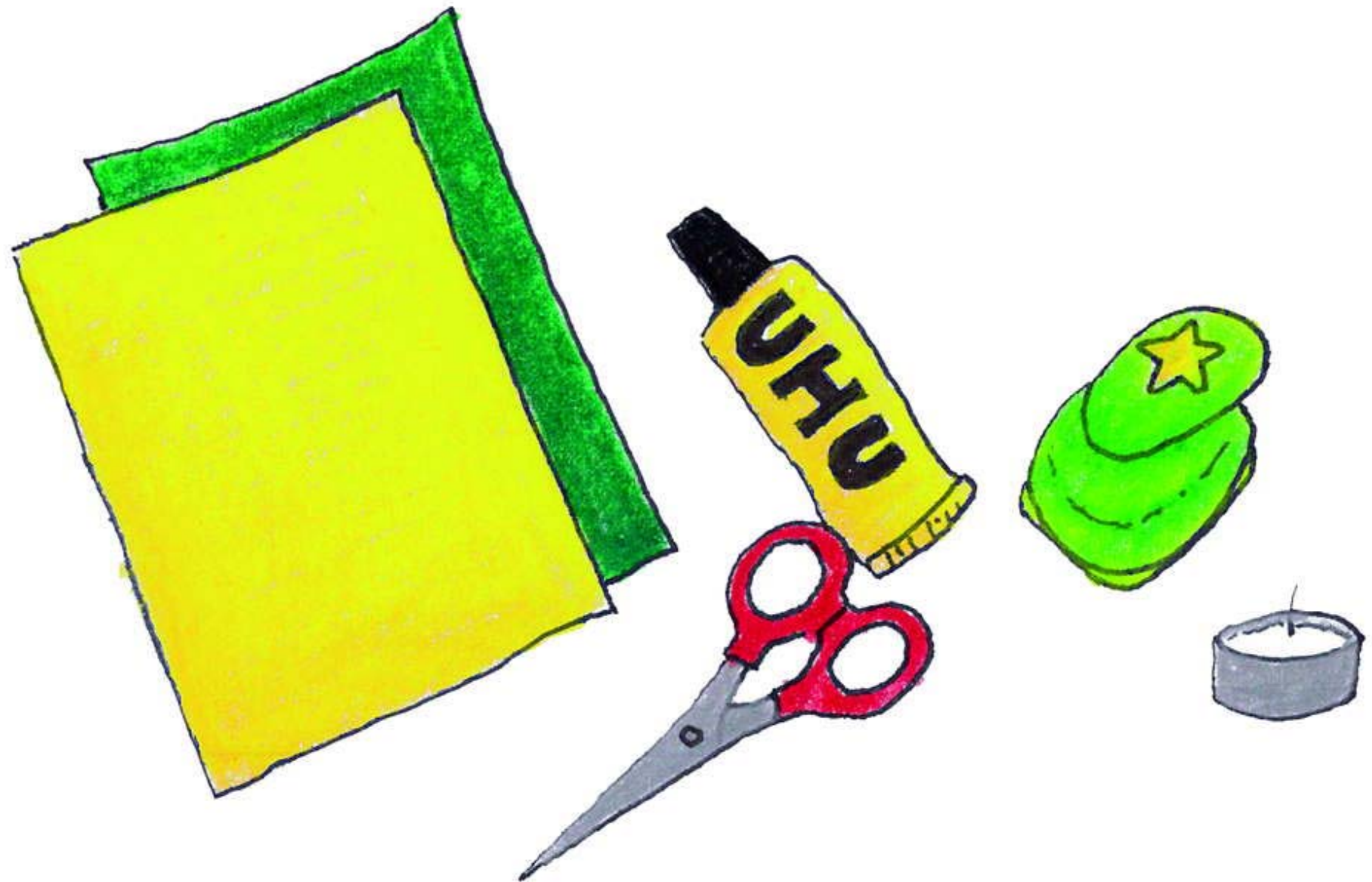


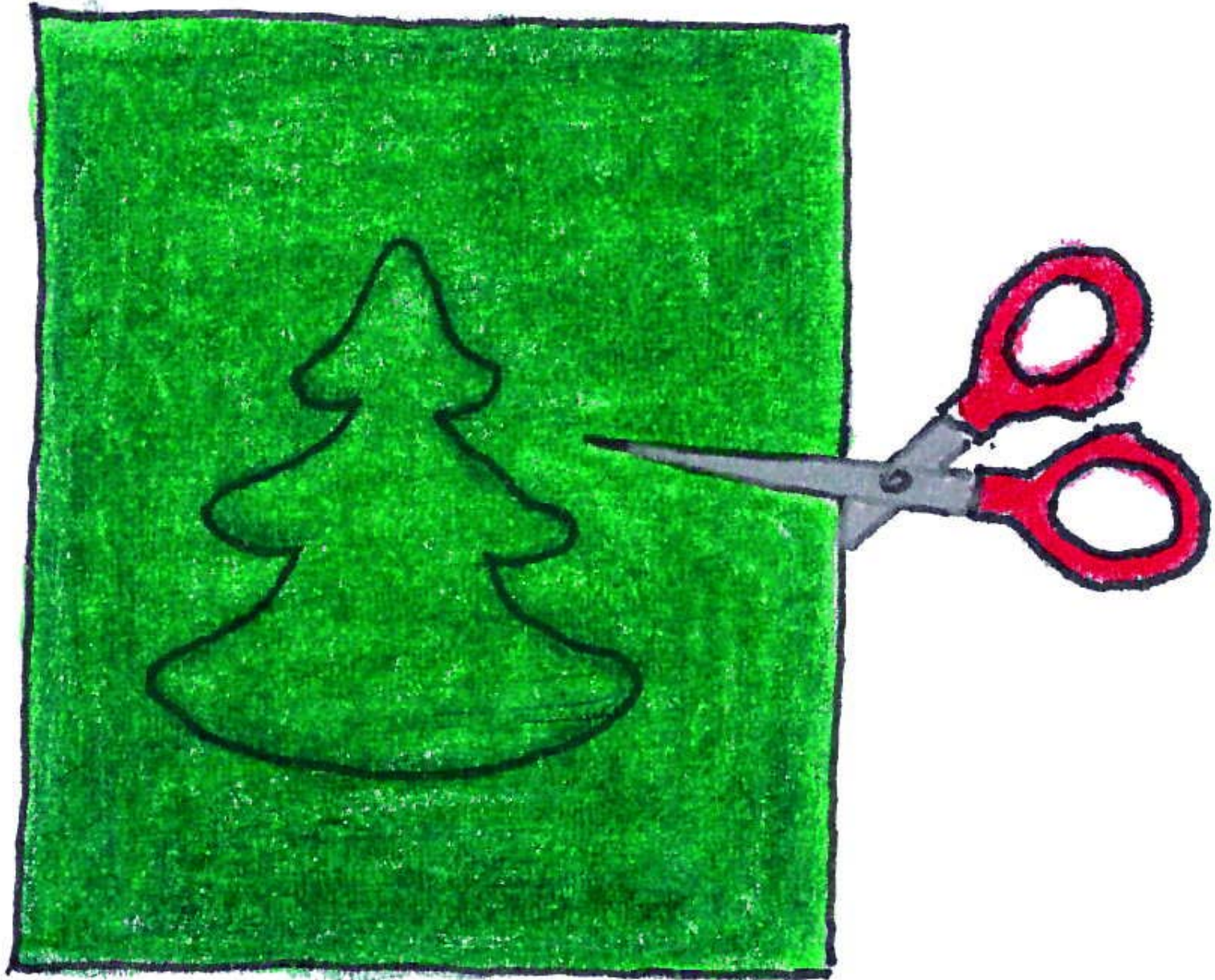


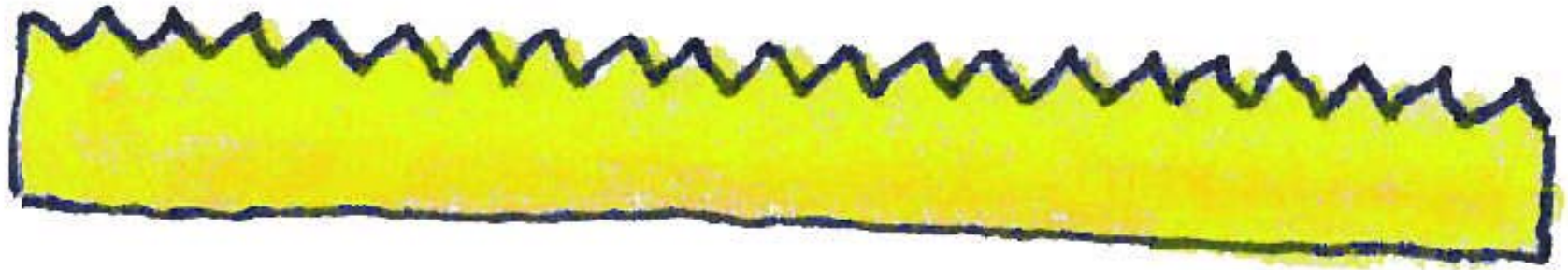


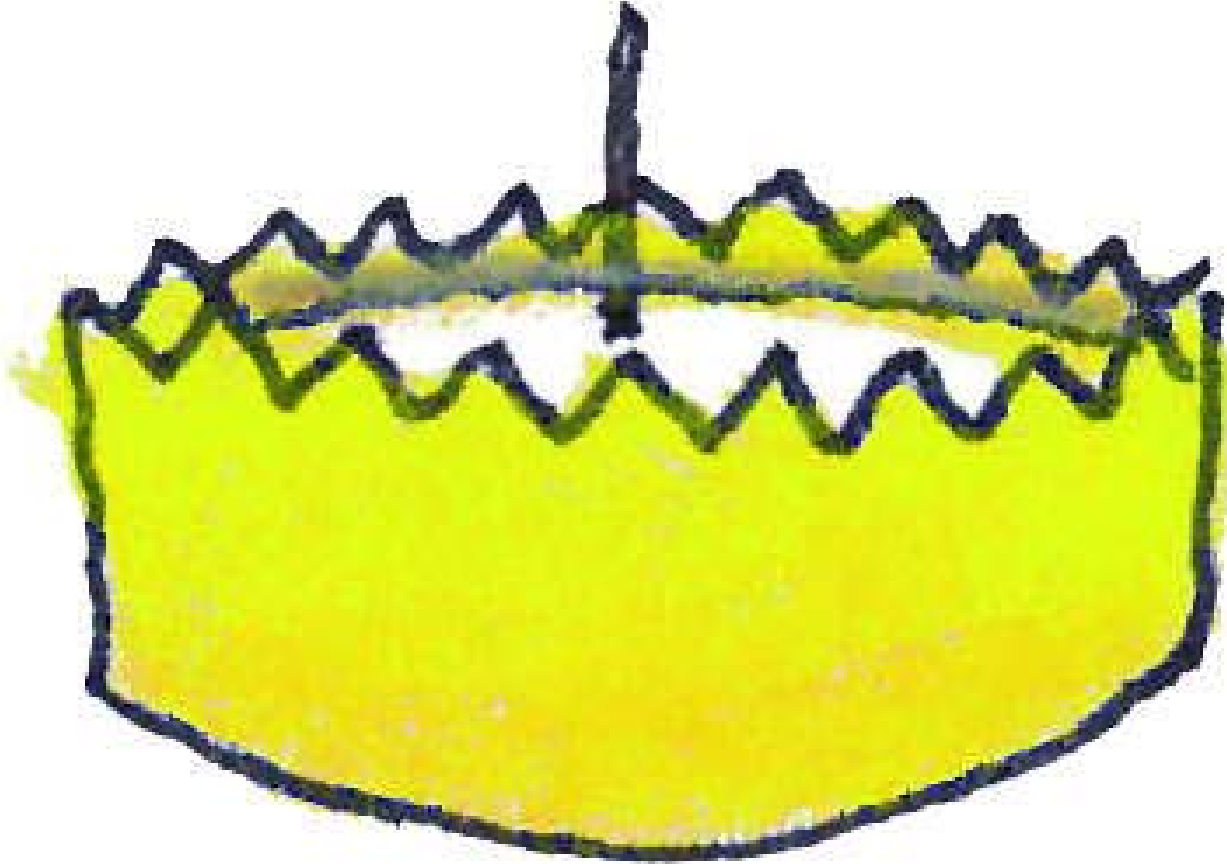












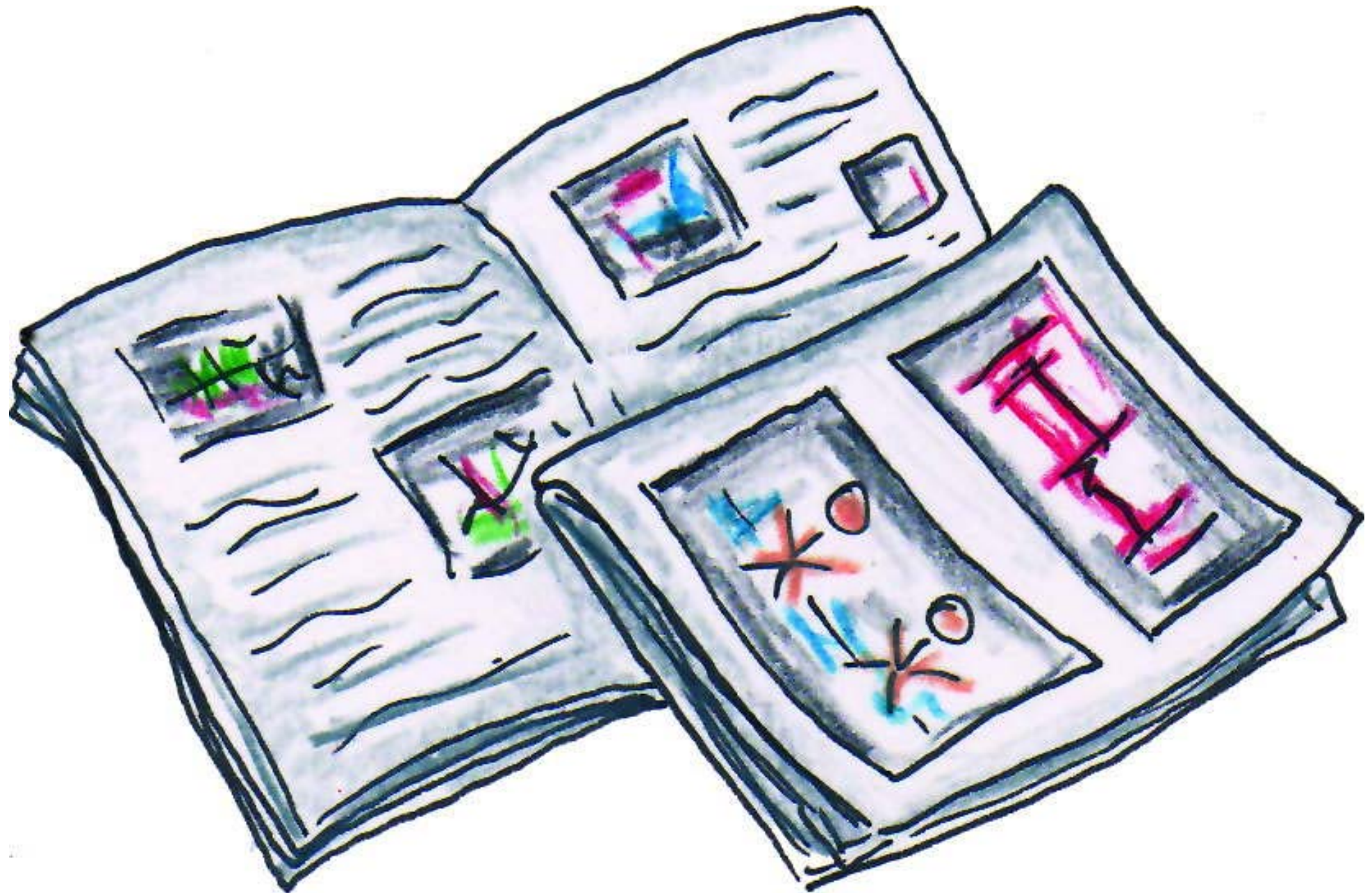






Handwritten musical score for the first system. The top staff is a vocal line in treble clef with a common time signature. The bottom staff is a piano accompaniment in treble and bass clefs. Handwritten chords are written above the vocal line: C, FΔ, Δ, G7, CΔ, Δ. The lyrics are: "1. Klin-ge-lin-ge-ling lie-bes Christkind kömmbald. Klin-ge-lin-ge-ling ausdem Tan-nen-wald,"

Handwritten musical score for the second system. The top staff is a vocal line in treble clef with a common time signature. The bottom staff is a piano accompaniment in treble and bass clefs. Handwritten chords are written above the vocal line: Am, DmΔ, Δ, G7, CΔ, Δ. The lyrics are: "klin-ge-lin-ge-ling bring was Schö-nes mit, klin-ge-lin-ge-ling ich dich herz-lich bitt'l"





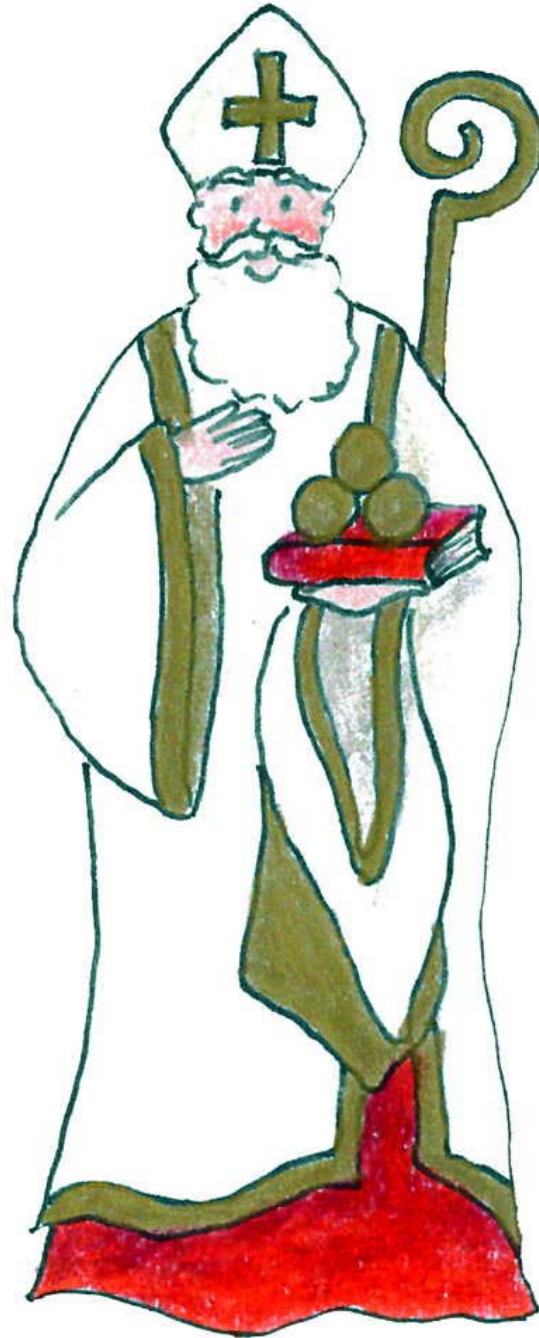


















önj









